

You're in our corner finding answers

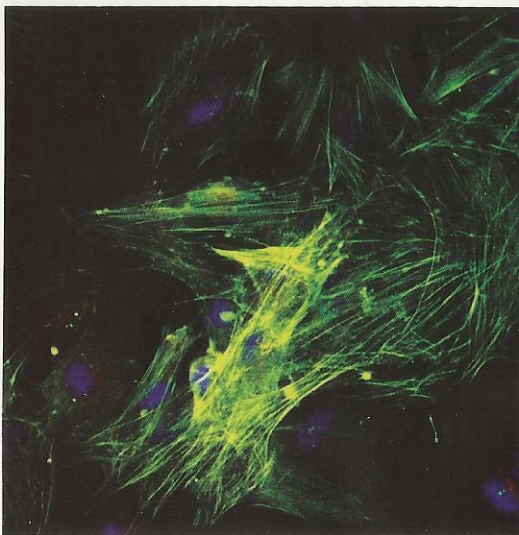
Prostate cancer is still one of the biggest killers of men in the UK. Yet diagnosis and treatment is still a decade behind many other cancers. With your help, we're fighting to change this.

The diagnostic test for prostate cancer is unsophisticated, invasive and not always accurate – it's a process that was developed in 1966. Meanwhile, other cancers can be detected with a relatively simple scan.

Thanks to your support, all that could change one day. Research we're funding through Professor Reyer Zwiggelaar is looking at whether using ultrasound and MRI scans together could lead to a simpler, more accurate diagnosis. Overlaying the two images could give doctors a better image of the prostate, how advanced the cancer is, where it's located and whether it's spread.

This research is still in its early stages. But one day it could mean more men diagnosed, more accurately – and more lives saved. With you in our corner, we hope to continue investing in this promising area of research.

This is just one of 66 exciting research projects that are underway today, thanks to you.



Prostate cancer associated fibroblasts cells under the microscope

Dr. Axel Thompson

You're in our corner supporting men

We're working hard to provide men living with prostate cancer with the information and support they need. With you in our corner, we're expanding our services out into communities. This year we've opened six regional centres in areas where there are gaps in service provision. By working in the heart of communities we can reach more men, raise awareness of prostate cancer and provide vital support. We are also partnering with local organisations to deliver services such as relationship counselling and support groups.

We're excited by the potential of this work to reach more men, and we hope to open three more centres this year. From diagnosis to decision making, from treatment options to living with side-effects, we hope to support men at every stage of their journey. We'll be able to empower more men with the information they need, to help them take control of their care. And that's thanks to you.

You're in our corner leading change

The quality of diagnosis and treatment for prostate cancer still varies hugely across the UK. For instance, research has shown that 90% of men in Greater Manchester had their prostate cancer tests fully explained to them in 2012 – while in Dorset only 60% of men did.

With you in our corner, we're fighting to change this. This year we launched the Prostate Cancer UK Quality Checklist – a list of 15 basic standards of care and treatment all men should expect to receive.

With your support we're campaigning hard for full nationwide adoption of the Quality Checklist. We already have the backing of over 200 MPs and MSPs, which has helped lead to the Quality Checklist being used by a growing number of Clinical Commissioning Groups and Health Boards.

This is an incredible achievement – and we couldn't have done it without you.

